



**Government of South Australia**

Department of Planning,  
Transport and Infrastructure

# **Property Location Browser (PLB) V3.0**

## User Guidelines

## **Property Location Browser (PLB) – User Guidelines**

The Property Location Browser (PLB) is a free map-based web site where information can be found for:

- Properties – links to SAILIS for ownership information
- Survey Marks – links to Survey Database for survey mark information
- Geographic Names – provides State Gazetteer information
- Land Administration Boundaries – Suburbs, Local Government Areas, electoral boundaries and more
- Planning and Development – Development plan zoning, land division applications, heritage places
- Building – bushfire protection areas, design wind speeds and more

Property information includes plan references, parcel numbers, Certificate of Title references, dual names, valuation numbers and addresses.

### **NOTE:**

- Do not rely on PLB data and maps for any purpose other than to get property details.
- Data represented in PLB is updated daily. Property alterations and additions take 2-3 weeks of data processing before appearing in PLB. Current property and ownership details should always be confirmed against the Certificate of Title.
- Property Location Browser is a Land Administration tool. The land boundaries shown are a graphical representation only with varying spatial accuracy. Displacement (visually) between boundaries and the digital image will occur, particularly in the rural areas.

These User Guidelines provides examples and detailed information to assist users in searching. Property Location Browser is compatible with a range of browsers – Internet Explorer (minimum of version 9 recommended), Chrome, Firefox and Safari.

Property Location Browser is accessible on the internet between 8am and 8pm each business day, and is available most weekends and public holidays.

For further information please contact Customer Service at [LSCustomerSupport@sa.gov.au](mailto:LSCustomerSupport@sa.gov.au).

PLB can be accessed from:

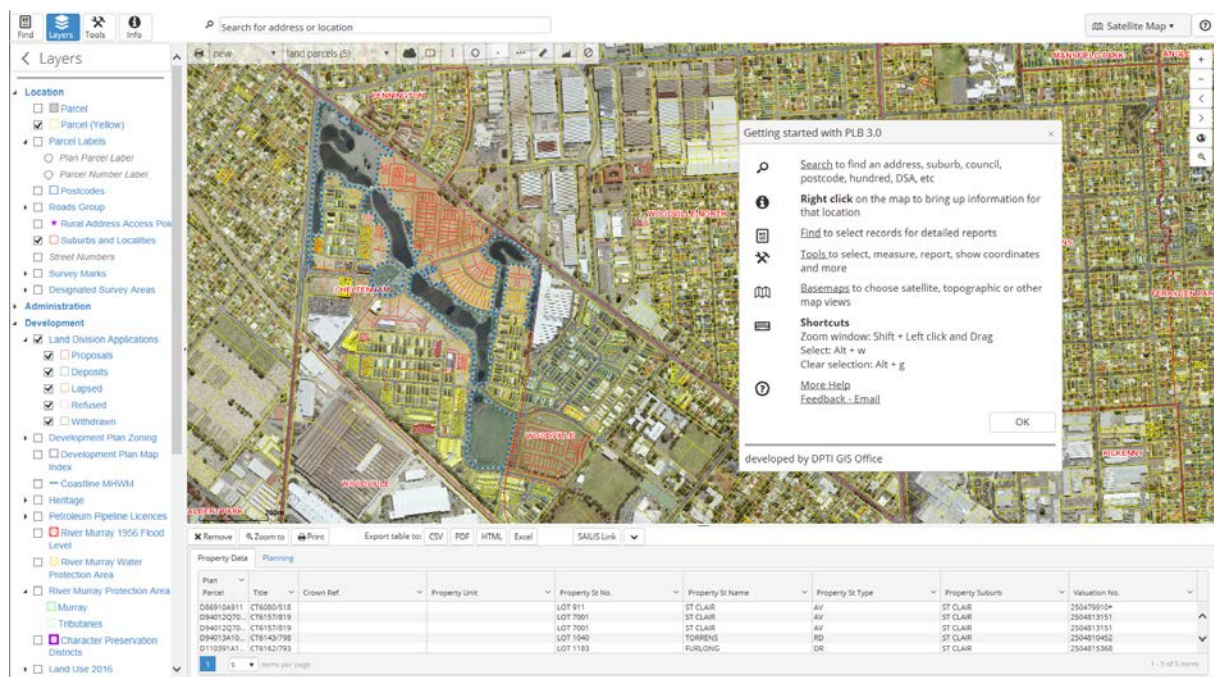
<https://www.sa.gov.au/topics/planning-and-property/buying-a-home-or-property/researching-a-property/property-location-browser>

## Table of Contents


<b>1. Welcome</b> .....	<b>4</b>
<b>2. Map Tools</b> .....	<b>5</b>
2.1 Mouse Navigation .....	5
2.2 Selection Keyboard Shortcuts.....	5
2.3 Navigation Tool .....	5
2.4 Toolbar .....	5
<b>3. Menu Bar</b> .....	<b>6</b>
3.1 Find Button.....	6
3.2 Layers Button .....	6
3.3 Tools Button .....	7
3.4 Info Button.....	7
3.5 Search Bar .....	7
3.6 Basemaps Dropdown.....	8
3.7 Help Button .....	8
<b>4. Reports</b> .....	<b>9</b>
<b>5. Select and Buffer Tool</b> .....	<b>10</b>
5.1 Creating a Highlighted Feature .....	10
5.2 Buffer a Highlighted Feature .....	10
5.3 Select a Highlighted Feature.....	10
5.4 Buffering Selections .....	11
<b>6. Further Information and Help</b> .....	<b>11</b>

## 1. Welcome

The GIS Office and Land Services of the Department of Planning, Transport and Infrastructure have developed the new Property Location Browser (PLB) public web map application to assist you in identifying free property related information. PLB also provides you with links to additional online information sources; SAILIS (title, plan, valuation and survey mark information) and Land Division Register (land division application information).



PLB provides assistance in a number of ways including help text at the mouse cursor, button flyover text, help icons, error messages and more.

The help button  (top right of screen) will provide you with access to general help, access to the SA Government Property and Planning – Researching a Property web page (<http://www.sa.gov.au/topics/planning-and-property/buying-a-home-or-property/researching-a-property/property-location-browser>) and an email link to Land Services support email address ([LSCustomerSupport@sa.gov.au](mailto:LSCustomerSupport@sa.gov.au)). Please contact Land Services support if you require help or wish to suggest enhancements.

## 2. Map Tools

### 2.1 Mouse Navigation

Map navigation reacts to your input devices:

- Scroll wheel = Zoom in/out (place cursor in centre of zoom)
- Left click drag = Pan
- Shift + left-click drag = Zoom into a rectangle

### 2.2 Selection Keyboard Shortcuts

- Alt + W = Repeat last selection method
- Alt + D = Clear selection

### 2.3 Navigation Tool

You can also select the navigation tool to:

- Zoom in
- Zoom out
- See previous view
- See next view if previous view chosen
- See home view (entire state)
- See a view of last selections



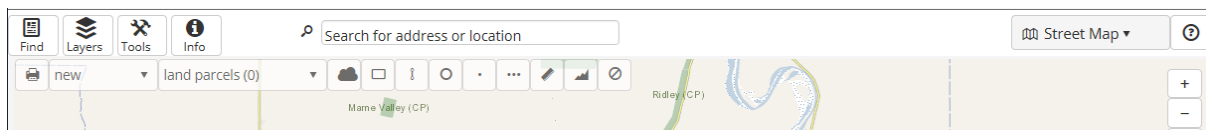
### 2.4 Toolbar



With the toolbar you can:

- Print or save a map report
- Choose whether to create a new selection each time, or modify the existing selection. This changes the option in the 'Find' panel too.
- View the total number of selection results
- Choose which features to select. Also opens Reports for previous selections.
- Choose which tool to select with, using the mouse
- Measure a distance or area
- Clear current selection and all drawings on map view

### 3. Menu Bar



#### 3.1 Find Button

Click the 'Find' button to open the 'Find' panel. Find lets you select these features to populate information into reports for:

- Land Parcels
- Land Division Applications
- Survey Marks
- Place Names

For these:

- Choose what features you want to select
- Choose what information you want to search with
- Enter your details and select the 'View results' button. This button is controlled by the selection method (New, Add and Subtract) chosen in the Toolbar or Tools panel. 'Reports' panel will appear showing how many results you have.

The other features shown in the Find panel you can find and highlight the location of. Once highlighted you can use the 'Select and Buffer Tool' (left-click) to select land parcels, survey marks, applications or place names located in that location.

#### 3.2 Layers Button

Opens the map 'Layers' details panel:

- View map layers and symbology
- Expand and contract map sub-layers and symbology
- Toggle layers or sub-layers on or off. These appear at different map scales and are grayed out if they do not appear at the current map scale.

### 3.3 Tools Button

Opens the 'Tools' panel:

- Map Report - Print or save current map view (PDF, JPG)
- Display or go to coordinates
- Use the Selection Tools to make a selection:
  - Set whether to create a new selection each time, or modify your existing selection.
  - Set which features to select. Also opens 'Reports' for previous selections.
  - Choose which tool to select with, using the mouse
  - Buffer selected features
  - Clear every selection and all drawings and highlights on map view
- Measure a distance or area
- Clear all drawings and highlights on map view
- Hide or show the toolbar

### 3.4 Info Button

Opens the 'Info' panel which gives a range of information when you right-click on the map. On a mobile device 'Info' is activated by pressing your finger down for 2 or 3 seconds on the map. Click a drop-down to view the related information retrieved.

You can view previous information by clicking the 'Info' button.

Note - the 'Info Panel' does not work on mobile or tablet devices due to the inability to right-click.

### 3.5 Search Bar

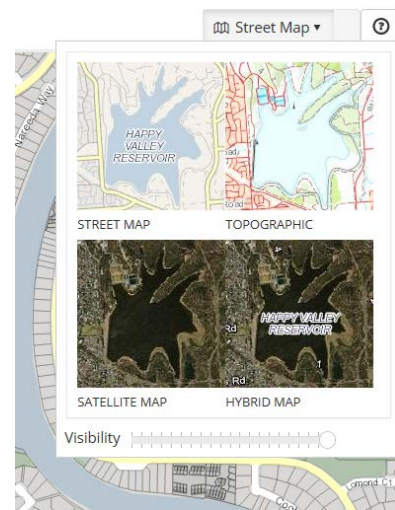
Entering letters into the search bar helps you to find and highlight a location based on:

- Address
- Place name
- Suburb
- Postcode
- Council
- Hundred
- Designated Survey Area

### 3.6 Basemaps Dropdown

In the top right corner of the screen the underlying map can be changed between street, topographic, satellite and hybrid (labelled satellite) imagery. A sliding bar underneath allows you to adjust basemap visibility. Drag to 0% if you wish to hide the basemap from view.

A scale bar is always shown on the bottom left of the map. Viewable satellite imagery dates and resolution are available from within 'Info' functionality. To see land parcels more clearly with the satellite basemap turn on the yellow boundary parcel layer.



### 3.7 Help Button

The top right 'Help' button opens the splash screen giving:

- Dynamic help by clicking on the underlined text
- A link to the support web page
- A link to enable you to email us



## 4. Reports


Plan Parcel	Title	Crown Ref.	Property Unit	Property St No.	Property St Name	Property St Type	Property Suburb	Valuation No.
D38215A5	CT6128/361			61	HENLEY BEACH	RD	MILE END	2161372007
D42331A57	CT5292/800			65	HENLEY BEACH	RD	MILE END	2161370001
D42331A58	CT6134/123			63	HENLEY BEACH	RD	MILE END	2161371004

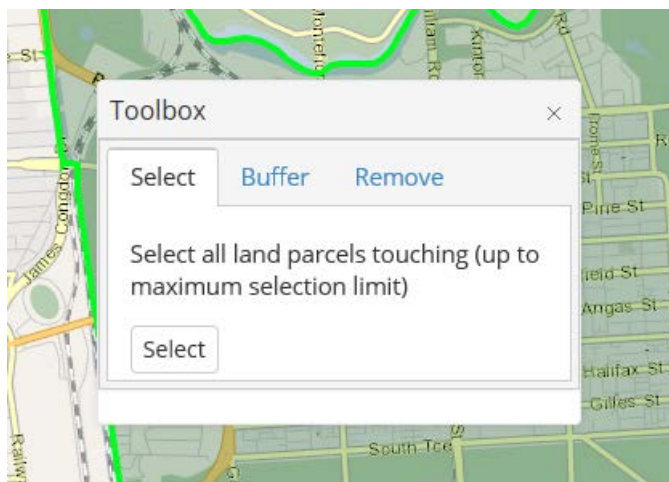
Reports appear when you have selected land parcels, survey marks, applications or place names. They also appear when you change a selection type and previous selections for that feature exist. The 'Reports' panel lets you:

- View the number of your selections
- Click the column name to sort information
- Export all selections to CSV, PDF, HTML and Excel formats
- Switch between report tabs to view different land parcel information
- Click in a row to highlight a feature on the map view
- Click in a row and use one of the buttons at the top of the report to:
  - Remove a highlighted row
  - Zoom to the feature in a highlighted row
  - Print or save a map with a report for a highlighted land parcel or place name
  - Link to SAILIS for a highlighted land parcel
  - Link to Land Division Register for a highlighted application
- Link to the SAILIS Survey Marks details page for all survey marks selected or retrieve a unique list of survey plans linked to selected survey marks by selecting the Plan Images link.

Mark Num.	Type	Description	Horiz. Order	Horiz. Entry Date	Vert. Order	V Entry Date	50K Map Ref.	2500 Map Ref.	Dup. Mark No.
66281109	Network PSM HV	PSMP	3	26/02/2000	3	06/12/2004	6628-3	6628-50-c	
66287419	Gone	SPK	3	26/02/2000			6628-3	6628-50-c	
66287471	Gone PSM	PSM	3	26/02/2000			6628-3	6628-50-c	
66287472	Other H	SPK	3	26/02/2000			6628-3	6628-50-c	
66288123	Other H	SPK	3	26/02/2000			6628-3	6628-50-c	

## 5. Select and Buffer Tool

When this symbol  appears on the screen over a highlighted feature then left-click your mouse and the 'Select and Buffer Tool' toolbox appears:



### 5.1 Creating a Highlighted Feature

There are many ways to create or highlight a feature that can be used to buffer and select:

- Right-click a point on the map. This way you can create an 'Info' point marker to buffer a circle around.
- Click a row in a report
- Use Find to highlight a suburb, postcode, council, etc.
- Use the Measure Distance or Measure Area tools. This way you can create a line or polygon to buffer.
- Use the information drop-downs in the 'Info' panel and click on the 'Show on screen' button.

To remove a highlighted feature choose the 'Clear All' button on the toolbar or the 'Clear Selection' or 'Clear Drawings' buttons in the 'Tools' panel.

### 5.2 Buffer a Highlighted Feature

Use the 'Select and Buffer Tool' to buffer a highlighted feature to increase its size.

### 5.3 Select a Highlighted Feature

Determine your selection method and type using the toolbar or 'Tools' panel. Then use the 'Select and Buffer Tool' to select land parcels, survey marks, place names or applications within a highlighted feature.

## 5.4 Buffering Selections

Apart from buffering a highlighted feature you can also use the 'Buffer Selection' button in the 'Tools' panel. This way you can buffer groups of selected land parcels or valuation polygons and then select within using the 'Select and Buffer Tool'.

## 6. Further Information and Help

- For full functionality, general information, version updates, FAQ and Quick Tips go to the SA Government Property and Planning – Researching a Property web page (<http://www.sa.gov.au/topics/planning-and-property/buying-a-home-or-property/researching-a-property/property-location-browser> )
- Contact Land Services by email: [LSCustomerSupport@sa.gov.au](mailto:LSCustomerSupport@sa.gov.au).