

20. CHANNEL RESERVES

Channel reserves in irrigation areas that are surplus to requirements are disposed of by merging them with adjacent land or they become public road or reserves.

The following rules are used to enable large balances of channel reserve to be shown diagrammatically.

20.1 Specific Requirements

- 20.1.1 Contact with the regional office of the Minister of Environment and Conservation is required prior to plan preparation to ascertain the division requirements.
- 20.1.2 The Plan Purpose must show DIVISION.
- 20.1.3 Bearings and distances must be only shown for that portion of the Channel Reserve and adjoining land involved in the current transaction including any easement(s) that traverse the subject land being merged. Data and areas must not be shown for the balance channel reserve or parcels (see [Figure 20.1](#)).
- 20.1.4 The balance of the channel reserve must be shown as:
- Separate allotments with the position of the boundaries being the production of existing parcel boundaries or joins between previously defined points.
 - Part of the main diagram (to scale) or on a separate diagram (that need not be to a prescribed scale but accurately delineates the parcels).
- 20.1.5 Where the balance channel reserve allotments are subject to easements, the easement boundaries must be accurately plotted on the diagram sheet with appropriate notes in the Annotations panel of the Textual Sheet (data for the easement must not be shown).
- 20.1.6 Where the subject land or the balance channel reserve allotments are together with easements over land outside the bold black lines, the requirements for showing servient land is as set out in Section 8.5 Easements External to Subject Land and the Textual Sheet requirements in Section 5 Easement Details.

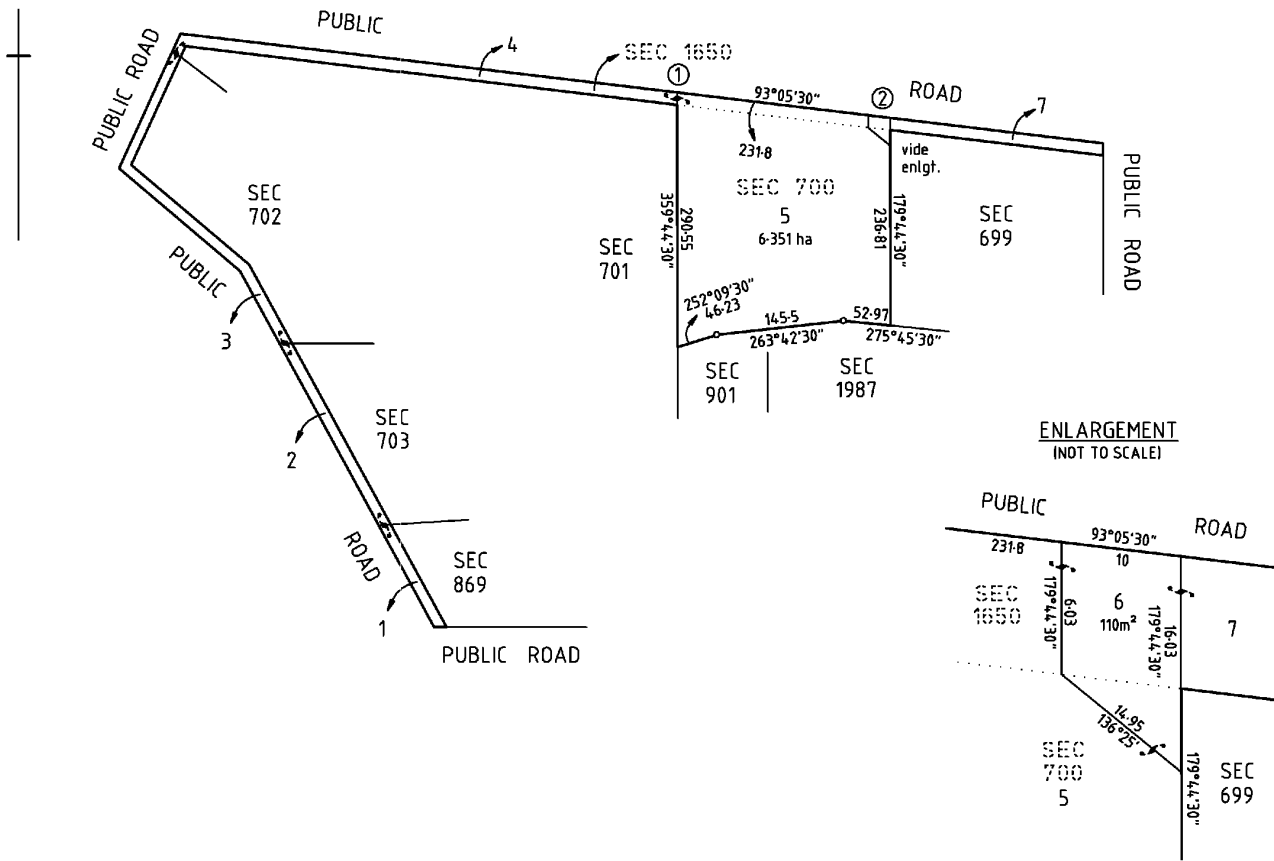


Figure 20.1