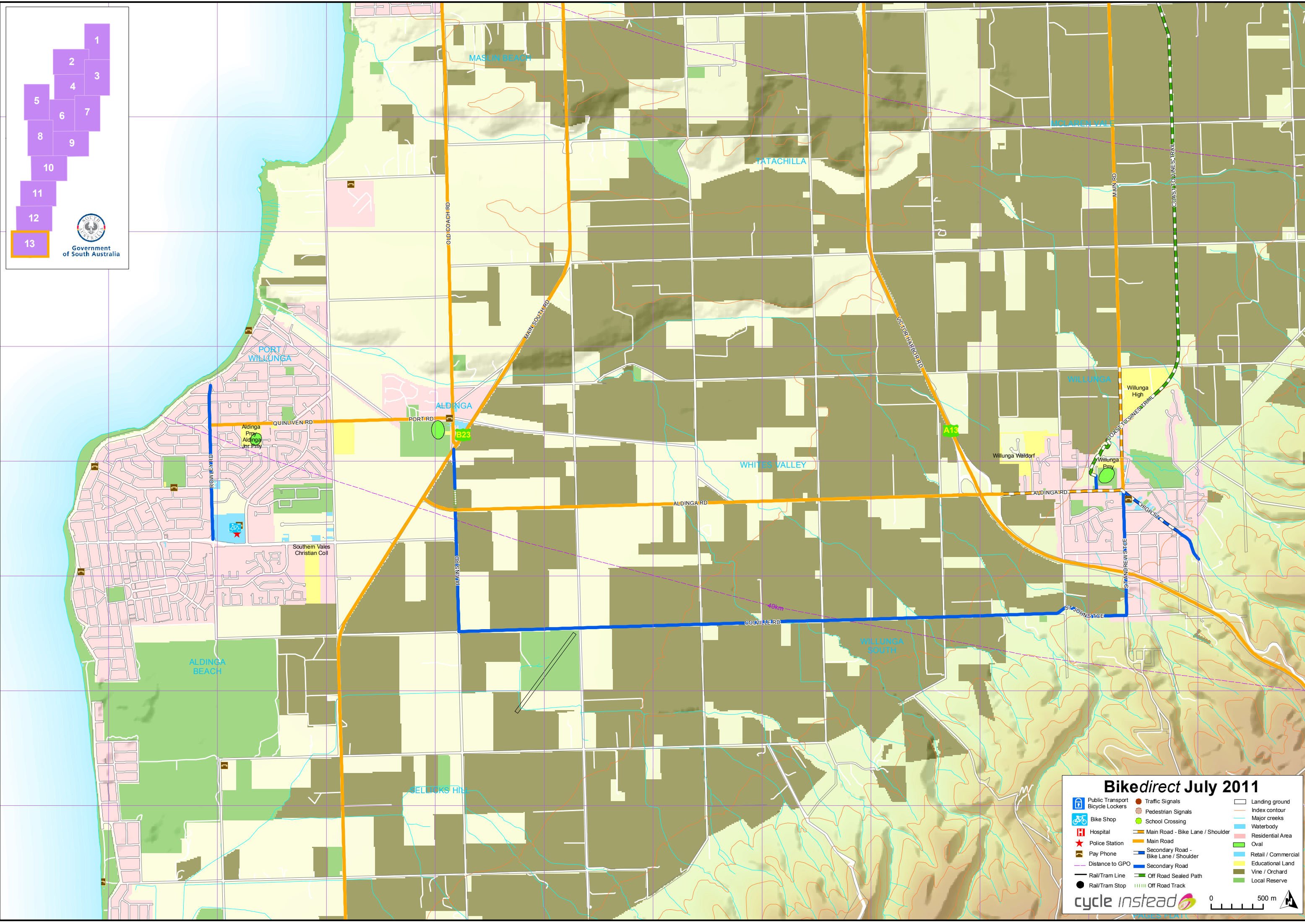


Government of South Australia



Bikedirect July 2011

| | | |
|------------------|---------------------------------------|---------------------|
| Public Transport | Traffic Signals | Landing ground |
| Bicycle Lockers | Pedestrian Signals | Index contour |
| Bike Shop | School Crossing | Major creeks |
| Hospital | Main Road - Bike Lane / Shoulder | Waterbody |
| Police Station | Main Road | Residential Area |
| Pay Phone | Secondary Road - Bike Lane / Shoulder | Oval |
| Distance to GPO | Secondary Road | Retail / Commercial |
| Rail/Tram Line | Secondary Sealed Path | Educational Land |
| Rail/Tram Stop | Off Road Sealed Path | Vine / Orchard |
| | Off Road Track | Local Reserve |

cycle instead

0 500 m