



Disability Services

Community and Home Support SA

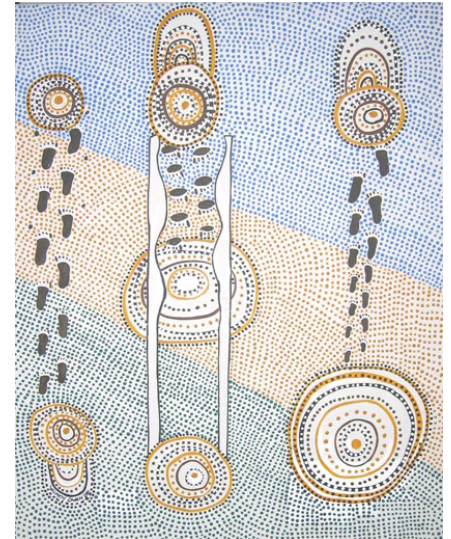
Information Sheet

Aboriginal and Torres Strait Islander people

Disability Services is committed to ensuring that disability services are delivered in a culturally respectful way that recognises, protects and continues to support the rights, culture and traditions of Aboriginal and Torres Strait Islander people.

We offer information and assistance through:

- ▶ our regional services, and
- ▶ the Disability, Ageing and Carers branch via the Community and Carer Engagement Team (Cultural Inclusion).



Regional Services

To help you, we can:

- ▶ Provide Aboriginal workers if you would prefer
- ▶ Help you and your family with disability services
- ▶ Coordinate services for Aboriginal and Torres Strait Islander clients
- ▶ Support the Aboriginal and Torres Strait Islander community with disability issues and provide information on services
- ▶ Provide cultural advice to non-Aboriginal staff of Disability Services
- ▶ Reconnect Aboriginal and Torres Strait Islander people with disability to their families and communities
- ▶ Assist Aboriginal and Torres Strait Islander people to discuss their needs and choosing the right services
- ▶ Advise disability agencies about improving access to services for Aboriginal and Torres Strait Islander people.

More information

For more information about regional services, you can contact your nearest Disability Services office, or:

- ▶ Call our Information, Enquiries and Referral Service on: **1300 786 117**
- ▶ Email a question to: disabilityinfo@dfc.sa.gov.au
- ▶ Visit our website at: www.sa.gov.au/disability

Community and Carer Engagement Team (Cultural Inclusion) Disability, Ageing and Carers Branch

The Cultural Inclusion Team provides leadership on policy, community consultation and regional planning for disability services to Aboriginal and Torres Strait Islander people with disability, their families and communities through:

- ▶ Researching needs, trends and priorities
- ▶ Developing policy within the department and other government sectors
- ▶ Improving contracting outcomes with non-government service provision.

The Cultural Inclusion Team gives full secretariat support to the **Aboriginal Disability Advisory Network SA Committee**—twelve members who meet quarterly, consult regionally and promote the voice of the people at state and national forums.

Elections are held every three years at a state Aboriginal disability conference that gathers to review, evaluate and set future priorities.

The Aboriginal Disability Network SA Committee is representative of voices of Aboriginal people and provides high level advice on disability services to South Australian Aboriginal communities.

For more information, contact:

Cultural Inclusion Team
Level 4, Riverside Centre
North Terrace, Adelaide 5000
Telephone 8415 4369

Aboriginal Disability Network SA Committee



Back row: Paul Sansbury, Bevan and Leanne Wilton, Josephine Judge-Rigney, Martha Watts, Colleen Roberts (support worker), Sandra Van Diermen (staff), Christine Wilson
Front row: Trischia Ritchie (staff), Jenny Warren, Graham Calma, Judy Kropinyeri-Dodd

