

COAST PARK

Adelaide's proposed 70km long waterfront playground



Coast Park is an initiative to develop a 70km linear park right along the metropolitan Adelaide coastline, from North Haven through to Sellicks Beach.

The Park will include, as far as possible a continuous two-way pathway or trail for walkers and cyclists along the coastal foreshore.

It has been progressively developed since 1992 by the six councils on the foreshore in partnership with the State Government.

Altogether, about 60 projects across six local council areas have been identified, including environmental restoration of dunes. Councils along the Metropolitan coastline are now undertaking these projects within stages.

Around 55% of the planned 70 kilometre trail has already been completed.

Concept Plan

The Department of Planning, Transport and Infrastructure, other state government agencies, local councils and key stakeholder groups jointly developed the Coast Park Concept Plan, which was released in 2001.

The Concept Plan brought together all of the important planning concerns to provide guidance for the development of this recreational and natural resource. It set out a staged, 10-year framework that complemented many existing council-initiated works plans for the coastline in their own areas.

The Concept Plan is based on eight discrete precincts that reflect the regional character of each section of the coast.



Around 60 potential Coast Park projects have been identified which aim to:

- provide public access along the length of coast
- provide a pedestrian and cycling-friendly foreshore environment
- facilitate the redevelopment and enhancement of coastal centres

- coordinate state and local government decision making and funding of Coast Park projects
- recognise and enhance the diversity of natural and built environments along the coast.

Coast Park Vegetation Management Project

Reserves along the Adelaide metropolitan coastline have faced a range of management issues contributing to biodiversity degradation. These include pest plant and animal invasion, pedestrian and vehicular access, erosion, stormwater discharges and fire.

To address this, the implementation of Coast Park includes a large-scale environmental management program called the Coast Park Vegetation Management Project.



This project provides coordinated and consistent management of Adelaide's coastal vegetation and has seen the largest investment to date for coastal biodiversity management in the Adelaide Mount Lofty Ranges Natural Resource Management Region.

A key element of this project is the production of a series of comprehensive Coastal Vegetation

Management Plans and the provision of funding, technical advice and assistance to land managers and community groups to ensure their implementation.

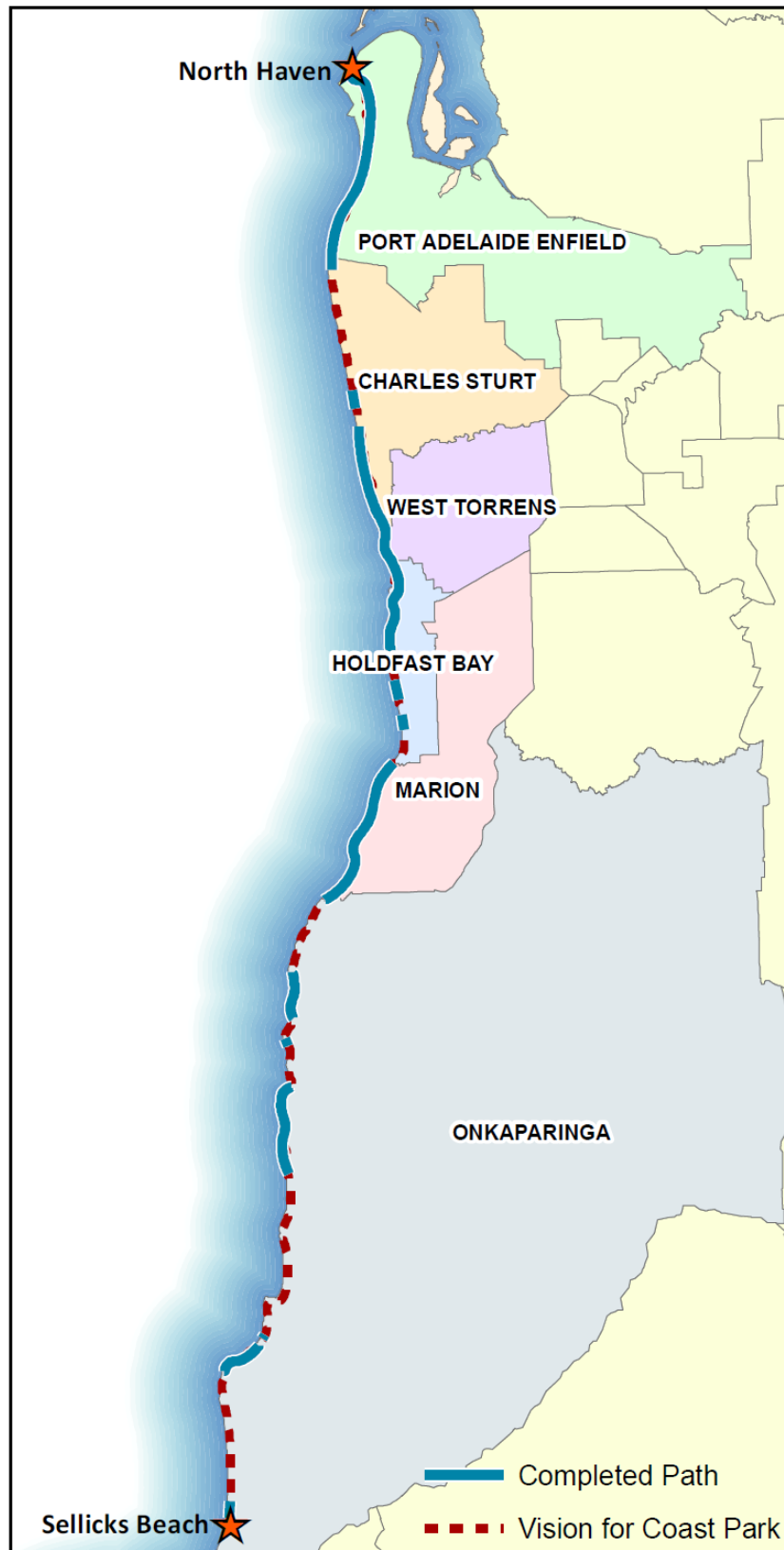
Implementation highlights of the Adelaide Metropolitan Coast Park Vegetation Management Project include:

- Management Plan implementation at Semaphore South, Semaphore, Largs Bay, Taperoo, North Haven and West Beach Dune Reserves, including access path and stormwater outlet rationalisation, and weed control
- Technical advice and assistance to Adelaide Shores and the Cities of Port Adelaide Enfield, Charles Sturt, Holdfast Bay and Onkaparinga
- Revegetation of approximately 75,000 indigenous plants in accordance with management plan recommendations
- On-going photo-point monitoring and baseline plant survival data has been collected across all Coast Park sites subject to management plan implementation to record changes in reserve condition over time
- Funding acquired from numerous sources including Coast Park, land managers, the Million Trees Program, and Natural Heritage Trust (through the Mount Lofty Ranges Interim Natural Resource Management Board), with in-kind support from community groups and individuals.

The project won a 2006 World Environment Day Award from the United Nations Association of Australia for 'excellence in marine coastal management'.



Government of South Australia
Department of Planning,
Transport and Infrastructure



Coast Park



City of Port Adelaide Enfield

Status: 8.5 kilometres completed



City of Charles Sturt

Status: new sections at Semaphore Park and Henley Beach are being planned, designed or constructed.



City of West Torrens

1.6 kilometres completed



City of Holdfast Bay

Status: construction is underway at Brighton

Coast Park



City of Marion

Status: 7.2 kilometres completed; a Master Plan for Hallett Cove Beach Heron Way Reserve is being prepared.



City of Onkaparinga

Status: new sections at Port Noarlunga South and Port Willunga/Aldinga Beach are being planned or designed.